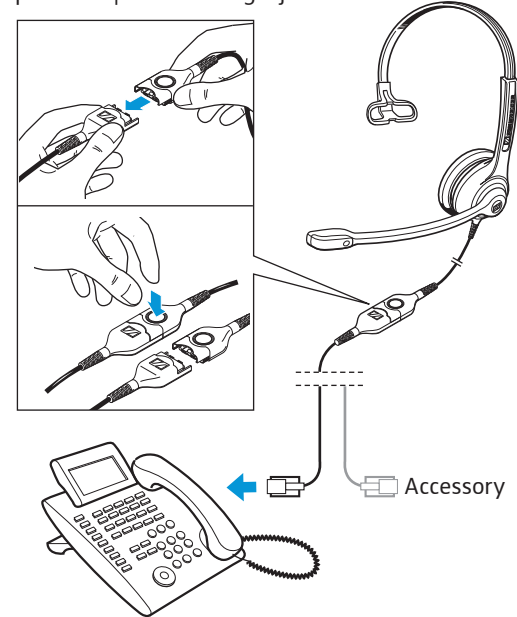




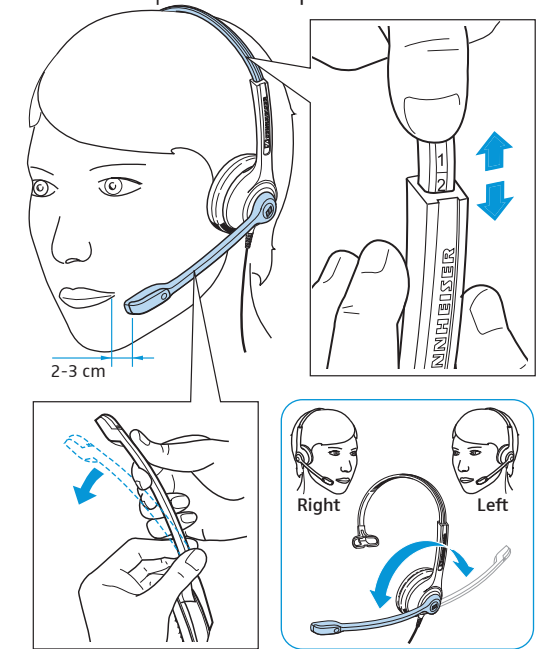
Delivery includes | Lieferumfang | Contenu |
 Volume di forniture | Volumen de suministro |
 Itens fornecidos | Leveringsomvang



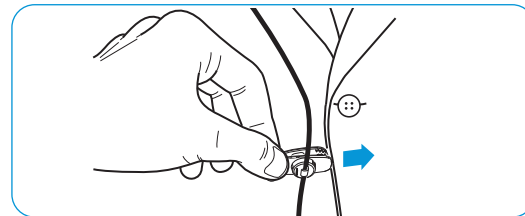
Connection possibilities | Anschlussmöglichkeiten |
 Possibilités de raccordement | Possibilità di
 collegamento | Posibilidades de conexión | Ligações
 possíveis | Aansluitmogelijkheden



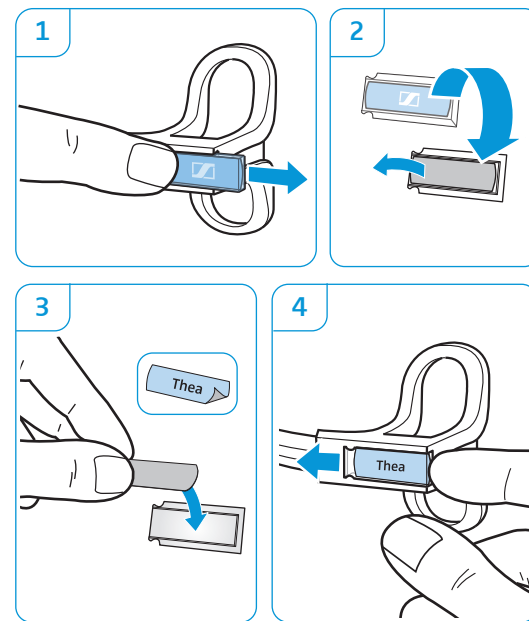
Wearing the headset | Headset aufsetzen |
 Mettre le casque-micro | Indossare l'headset |
 Ponerse los auriculares | Colocar o micro-
 auscultador | De headset opzetten



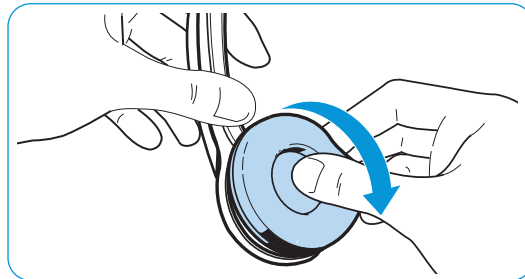
Using the cable clip | Kabel-Clip verwenden |
 Utiliser la pince pour câble | Utilizzo della clip
 per cavo | Utilizar el clip de cable | Utilizar
 o grampo para cabo | Kabelclip gebruiken



Labeling the headset | Headset kennzeichnen |
 Marquer le casque-micro | Contrassegni dell'headset |
 Marcar los auriculares con un nombre | Identificar
 o micro-auscultador | Headset markeren



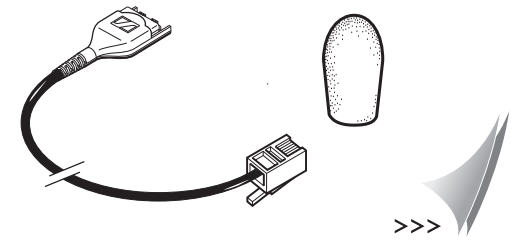
Replacing the ear pad | Ohrpolster austauschen |
 Remplacer le coussinet d'oreille | Sostituzione dei
 cuscinetti auricolari | Cambiar las almohadillas |
 Substituir as almofadas | Oorkussens vervangen



Detailed information | Ausführliche Informatio-
 nen | Informations détaillées | Informazioni
 dettagliate | Informaciones detalladas |
 Informações detalhadas | Uitvoerige informatie



Accessories | Zubehör | Accessoires | Accessori |
 Accesorios | Acessórios | Toebehoren





SC 230

Quick Guide
Snabbguide
Quick Guide
Krótka instrukcja obsługi

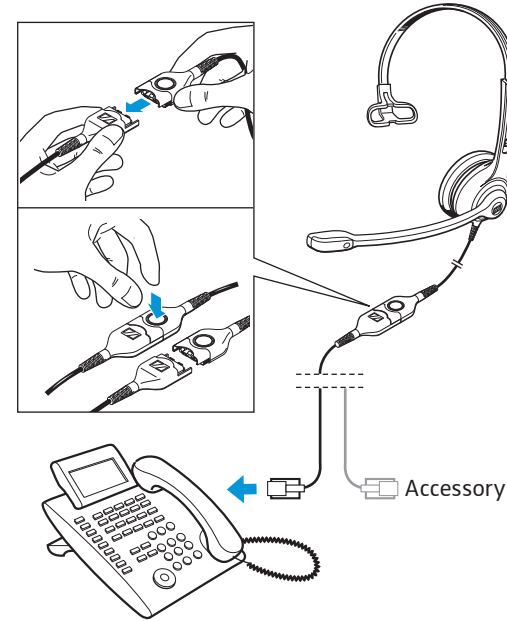
Hızlı Kilavuz
快速指南
クイックガイド



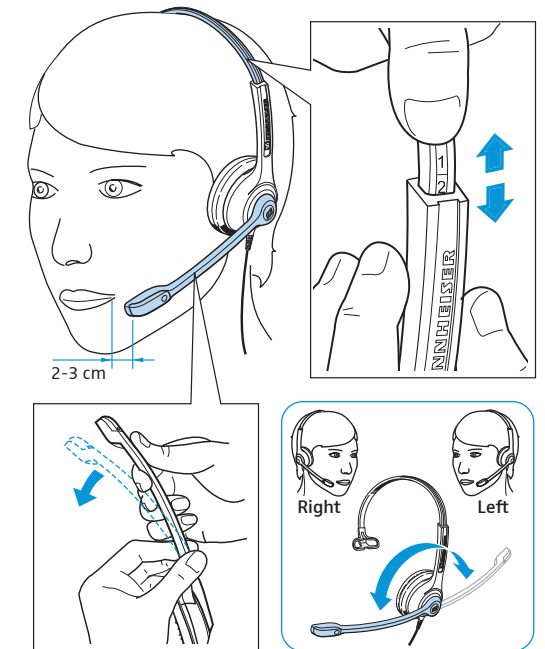
Leveringsomfang | Medföljande delar | Leveransomfang | Zakres dostawy | Teslimat Kapsamı | 供货范围 | 同梱されているもの



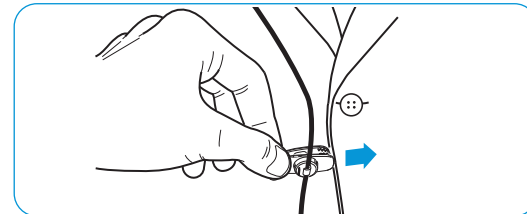
Tilslutningsmuligheder | Anslutning | Tilkoblingsmuligheder | Możliwości podłączenia | Bağlantı olanakları | 连接可能性 | 接続方法



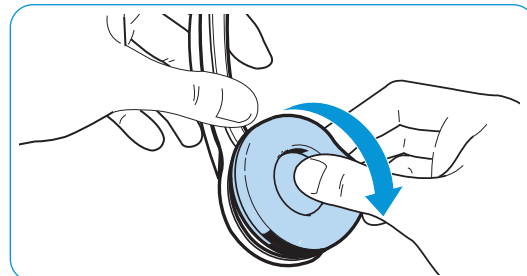
Brug af hovedsæt | Ta på headsetet | Sette på hodesettet | Zakładanie zestawu słuchawkowego | Kulaklığın takılması | 戴上耳机 | ヘッドセットを装着する



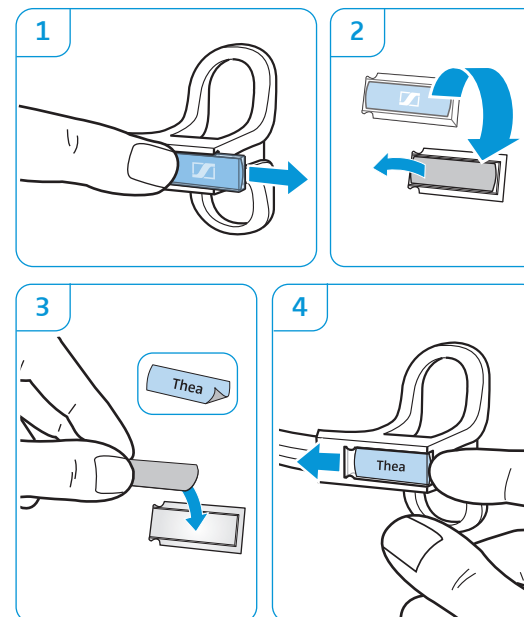
Brug af kabelklips | Använd kabelklämman | Bruk av kabelklips | Używanie zacisku kablowego | Kablo mandalı kullanılması | 使用耳机线夹 | ケーブルクリップを使用する



Udskiftning af ørepolstringer | Byt öronkuddar | Utskiftning av öreputer | Wymiana poduszek słuchawkowych | Kulak yastığının değiştirilmesi | 更换耳垫 | イヤーパッドを交換する



Identifikation af hovedsættet | Märk headsetet | Merke hodesettet | Oznakowanie zestawu słuchawkowego | Kulaklık setinin işaretlenmesi | 标记通讯耳 | ヘッドセットにラベルを付ける



Udførlige informationer | Mer information | Detaljert informasjon | Szczegółowe informacje | Ayrıntılı bilgiler | 详细信息 | 詳細情報



Sennheiser Communications A/S
Langager 6, 2680 Solrød Strand, Denmark
www.senncom.com

Printed in China, Publ. 06/11, A01

