

NOISE GUIDE

Manual - ENG

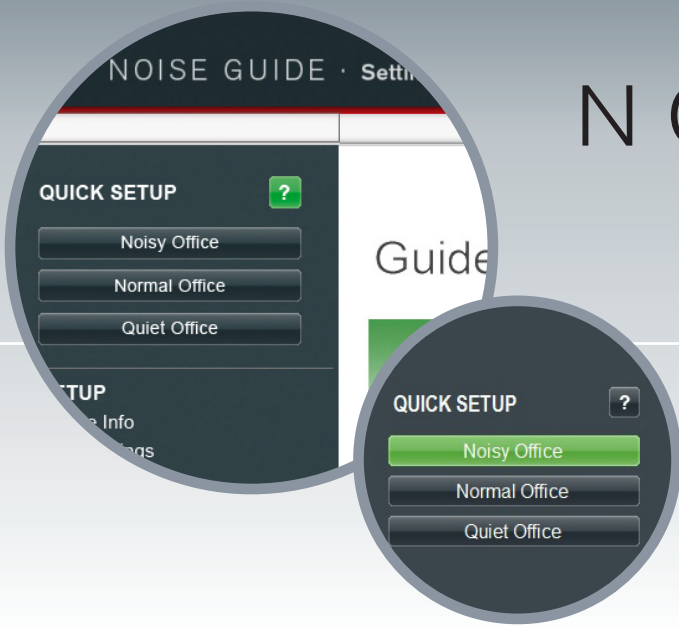
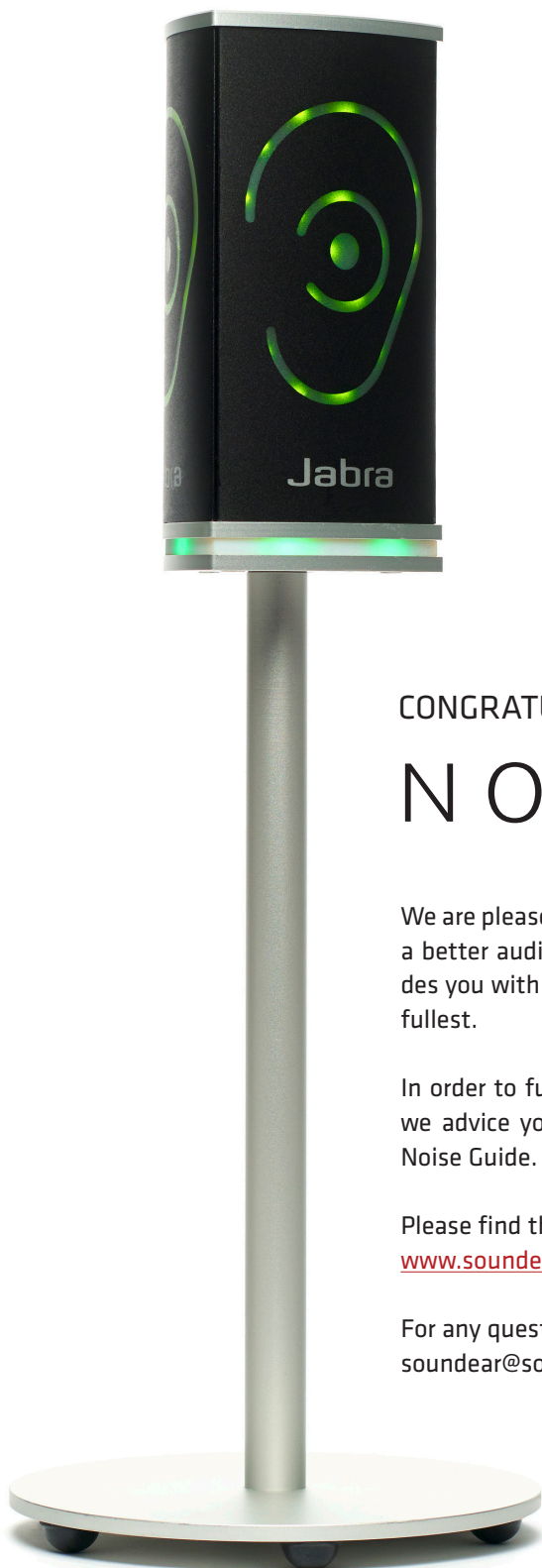


TABLE OF CONTENTS

CONGRATULATIONS ON YOUR NEW NOISE GUIDE	3
BEFORE YOU START	4
Box Contents	4
Installing the device	4
How does Noise Guide work?	5
Mounting	5
• Steel Cubicle Mount	5
• Aluminum Table Stand	6
Set time	8
Formatting the USB-key	8
SOFTWARE SETUP	9
Software Installation	9
Configuration	9
1. Direct configuration	9
2. Export setup to USB	9
OPERATING THE SOFTWARE	10
QUICK Setup	10
Setup	12
• Device information	12
• Light Settings	14
• User Manual	16
• About Noise Guide	16
Measurement Data	17
• Live Measurement	17
Navigating the software	19
• Reading the graph	19
• Show Marker	20
• Zoom function	21
• Measurement Library	23
• Import data from USB	24
Factory Settings	24
MAINTENANCE	25
Desinfection / cleaning	25
TECHNICAL SPECIFICATIONS	25
Noise Guide Software	25
Noise Guide Specifications	25



CONGRATULATIONS ON YOUR NEW

NOISE GUIDE

We are pleased that you have chosen one of our products to help you create a better auditive environment for yourself and others. This manual provides you with information on how to take advantage of your product to the fullest.

In order to fully understand the features and possibilities of Noise Guide, we advice you to read this manual carefully before you start using your Noise Guide.

Please find the latest software and manual updates on our web site:

www.soundear.com

For any questions or comments, please contact us on e-mail:

soundear@soundear.dk

Yours Sincerely,
SoundEar A/S

BEFORE YOU START

BOX CONTENTS



Check the box contents:

1. Noise Guide
2. USB-key with software
3. Power adaptor with EU, US og UK plugs.
4. USB adapter cable (A-plug to micro-B)

4

INSTALLING THE DEVICE

Noise Guide has 2 inputs at the bottom of the device.

1) A micro USB for power supply and export of data via a PC.

2) A standard USB input for exporting data from the internal log memory via the USB, and for offline configuration.



HOW DOES NOISE GUIDE WORK?



Noise Guide provides you with 2 types of measurements, simultaneously.

The ear symbol indicates the state of the current noise level while the LED panel at the bottom of the device indicates the average noise level over the past 15 minutes.

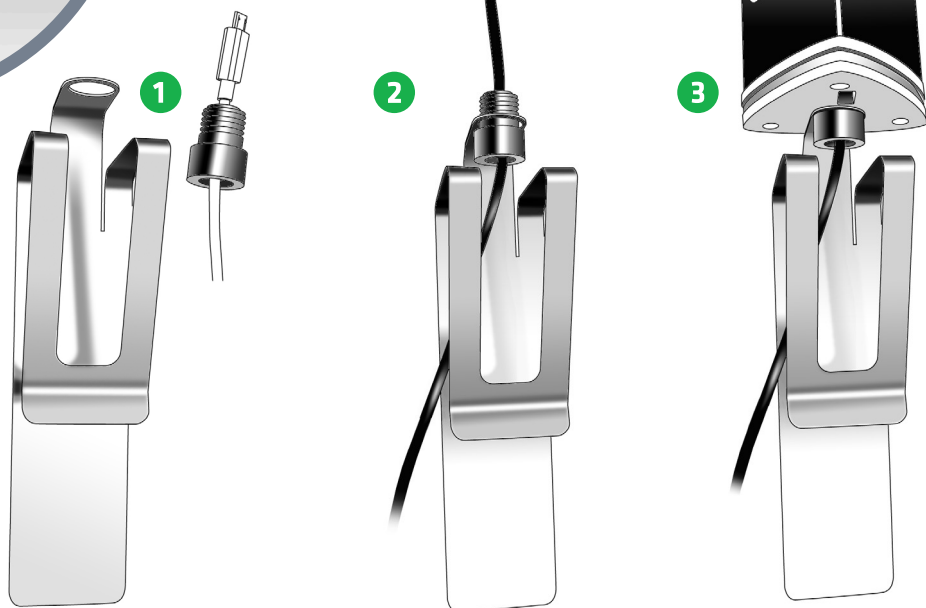
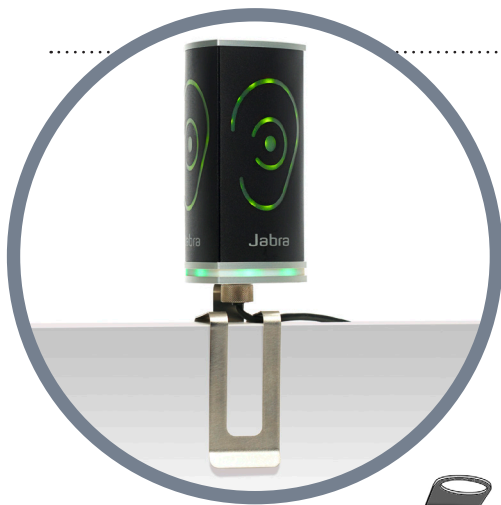
Microphone

The Ear symbol indicates the current noise level.

The LED panel indicates the average noise level over the past 15 minutes.

MOUNTING – STEEL CUBICLE MOUNT

5



MOUNTING – ALUMINUM TABLE STAND



1

CONTENT:

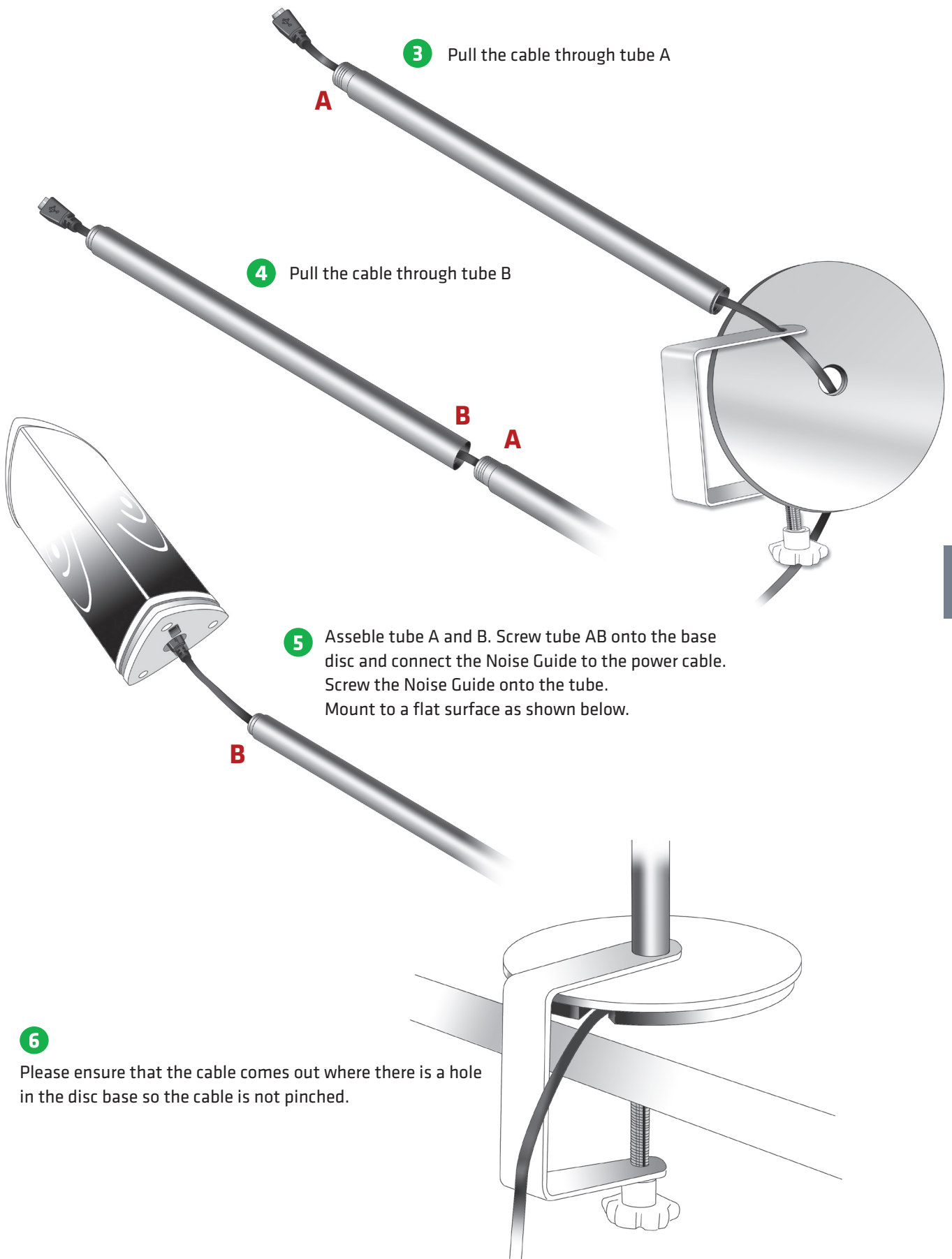
- Base
- Table grip
- Tube A
- Tube B

2

Pass the cable through the disc base, and then through the hole in the table grip.



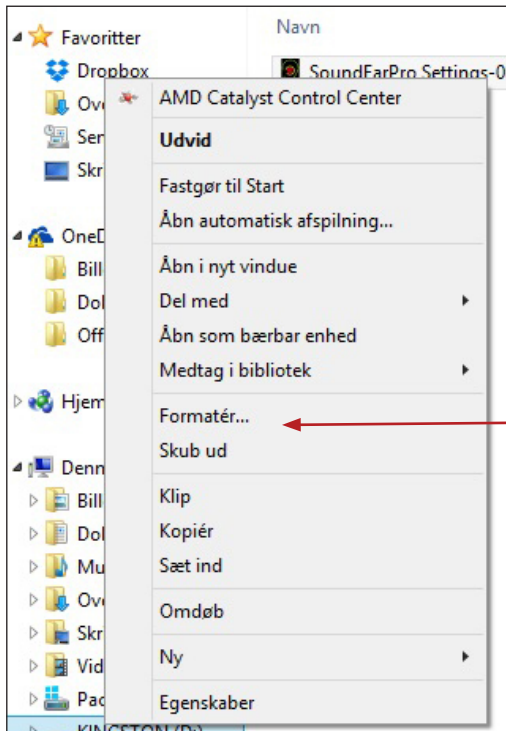
MOUNTING – ALUMINUM TABLE STAND



SET TIME

Noise Guide has a built-in time and date function that will set automatically the first time you connect the device to your PC.

FORMATTING THE USB-KEY

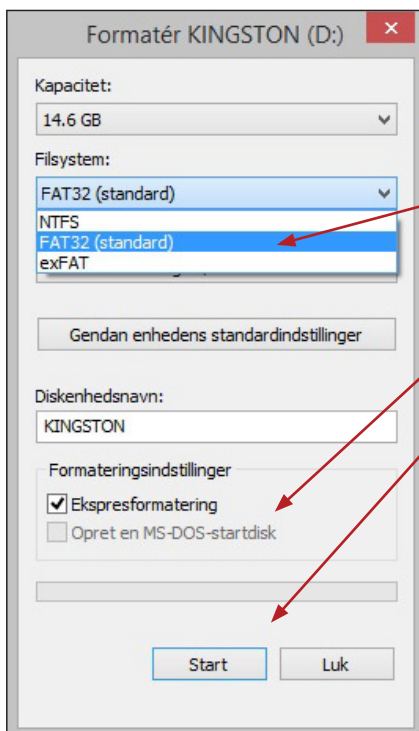


The USB key included is formatted in the format called "FAT32".

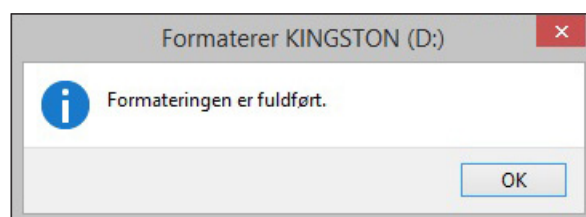
Read more about the functionality of the USB-key in the chapter "[Software Setup](#)" under "[Export setup to USB](#)" on [p. 9](#).

PLEASE NOTE! Remember to export any files you may have on your USB key before formatting, as the formatting will override any existing files.

1. Connect the USB key to your PC.
2. Right-click on the USB-drive.
3. Select "Format" from the drop-down menu.



4. Select "Fat 32" under File System.
5. Check the box "Express formatting"
6. Click "Start"
7. The USB key is now ready for use.



SOFTWARE INSTALLATION

Please find the software on the included USB key.

When you have installed the software, make sure to check for software updates to ensure that you are always updated with the latest version. Read more about this in the chapter "About Noise Guide" p. 16.

CONFIGURATION

There are 2 ways of saving your configurations:

1. Connect the device directly to your PC while performing the configuration.
2. Uploading your configuration to the USB-key.

1. DIRECT CONFIGURATION:

Connect the device directly to your PC. Click "Configure" every time you have changed settings. This way, your settings will be saved directly on the device.

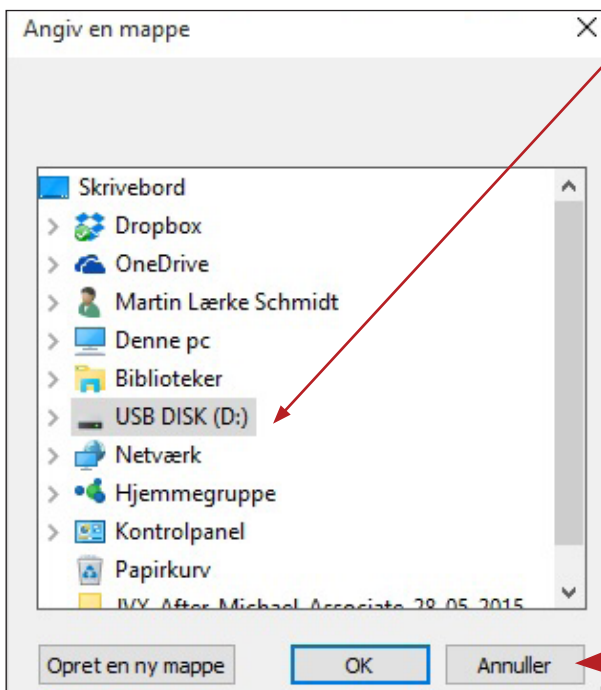
2. EXPORT SETUP TO USB:

Exporting the configuration to the USB-key is useful if you need to apply the same settings to multiple devices.

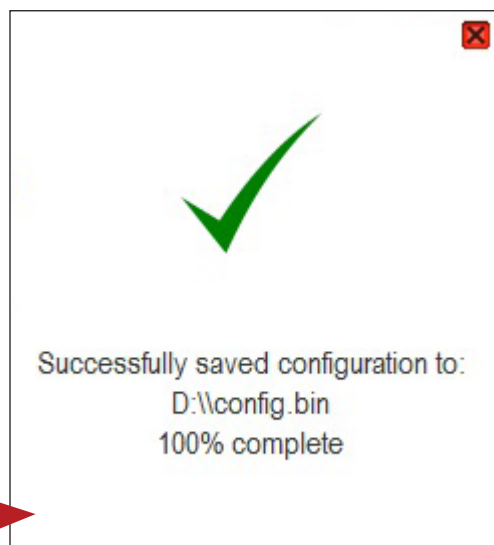
Export setup to USB

1. Insert the included USB-key.
2. Choose your settings.
3. Click "Export Setup to USB".

9



4. Save your settings to the USB-key and click "OK".
5. The pop-up window confirms that you have saved your configuration successfully.



6. Connect the device to a power source and insert the USB-key. The Ear symbol will light green for approx. 5 seconds to indicate that your configuration has been exported successfully.

OPERATING THE SOFTWARE

QUICK SETUP

There are 3 types of standard settings to choose from.

NOISE GUIDE · Settings

QUICK SETUP ?

Noisy Office

Normal Office

Quiet Office

SETPUP

Device Info

Light Settings

User Manual

About Noise Guide

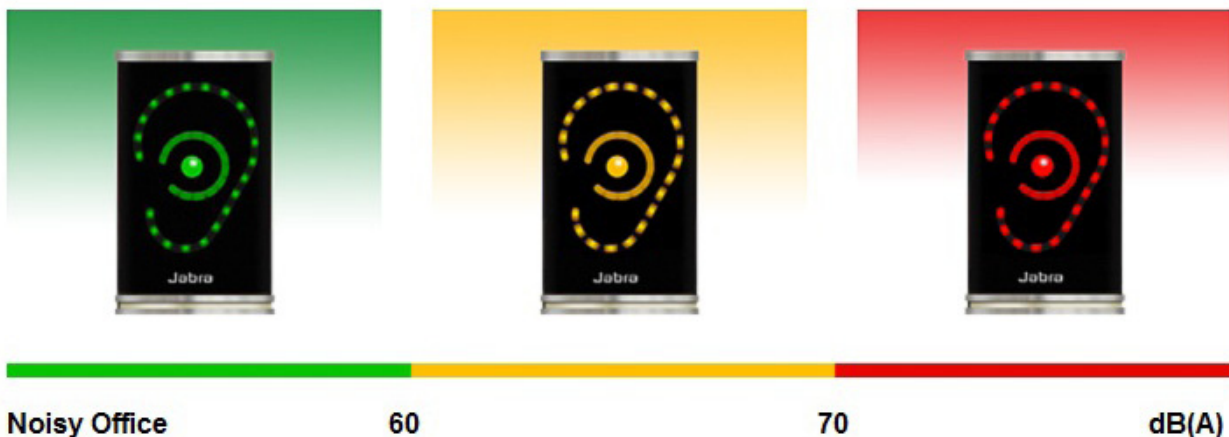
Guide: Quick Setup

To help decide which of the 3 options to choose, click on the question mark to get further details.

NOISY OFFICE:

- The device is lit green when the noise level is below 60 dB.
- The device is lit yellow when the noise level ranges from 60 dB to 70 dB.
- The device is lit red when the noise level exceeds 70 dB.

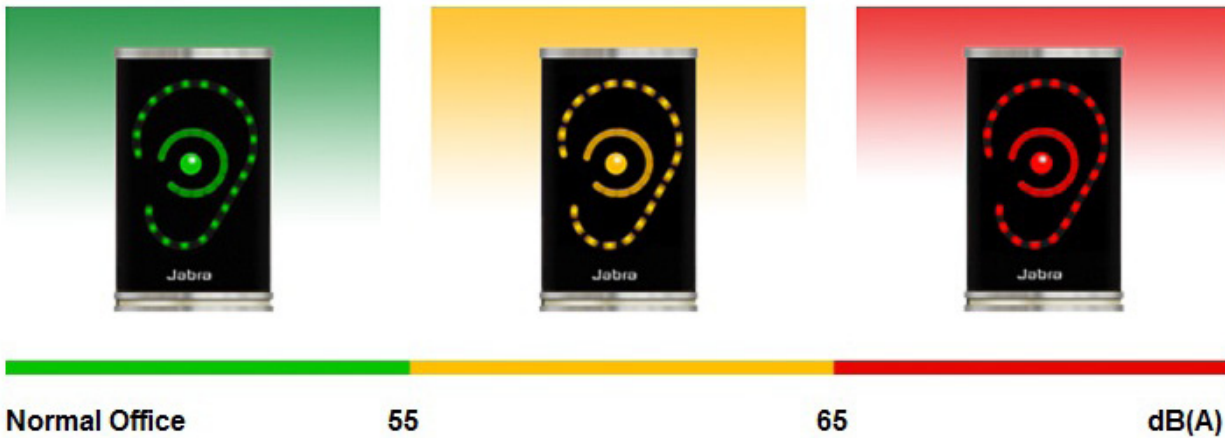
Noisy Office:



NORMAL OFFICE:

- The device is lit green when the noise level is below 55 dB.
- The device is lit yellow when the noise level ranges from 55 dB to 65 dB.
- The device is lit red when the noise level exceeds 65 dB.

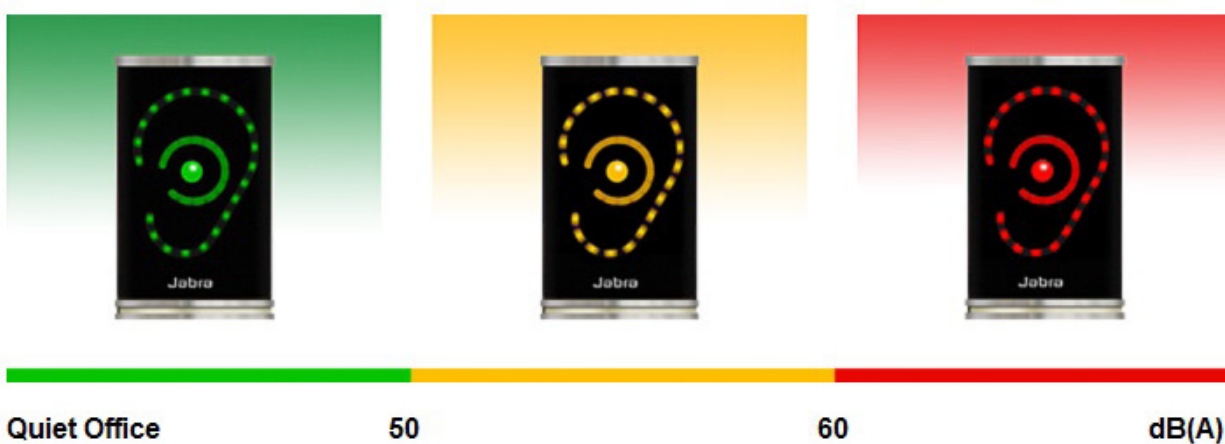
Normal Office:



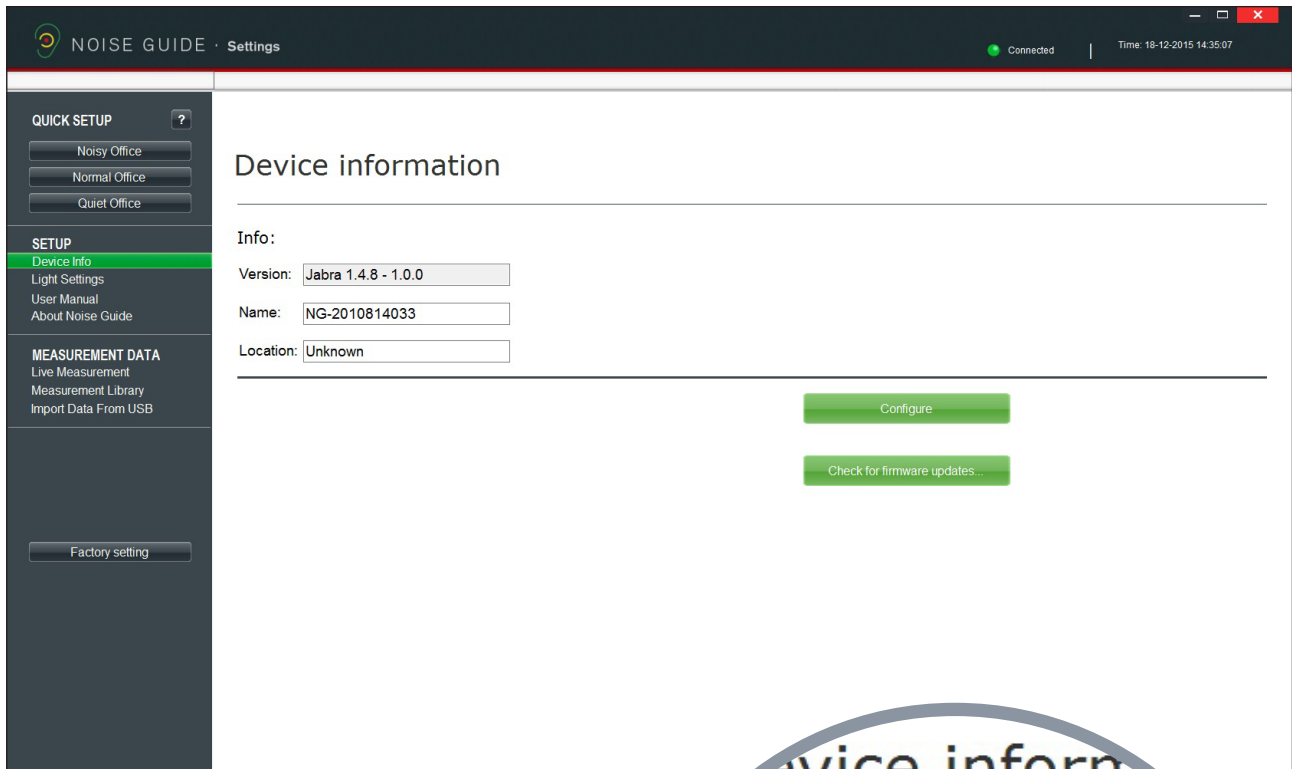
QUIET OFFICE:

- The device is lit green when the noise level is below 50 dB.
- The device is lit yellow when the noise level ranges from 50 dB to 60 dB.
- The device is lit red when the noise level exceeds 60 dB.

Quiet Office:



SETUP

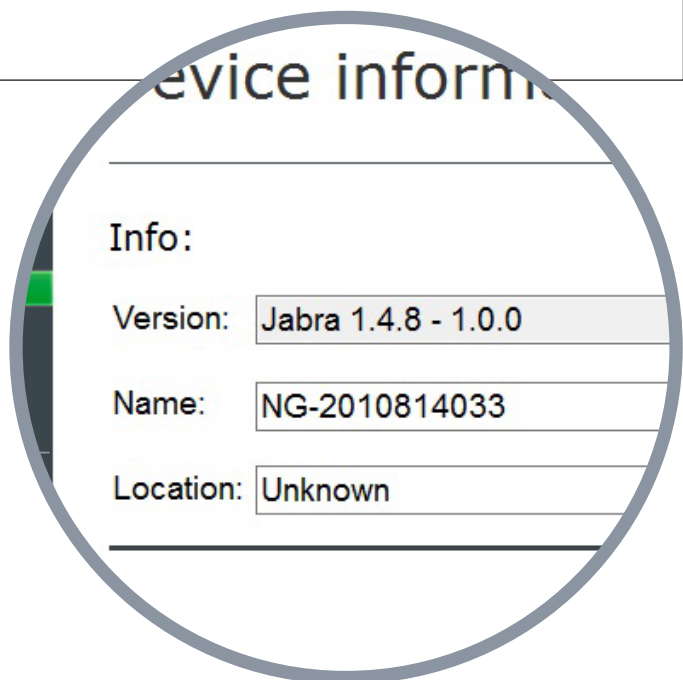


DEVICE INFORMATION

Version: Shows the firmware version that is installed on the Noise Guide.

Name: Name your device. Files in the internal log memory will be saved with this name and the date. **Please note** that the Noise Guide must be connected directly to the PC in order to name the device.

Location: Name the location of the device.

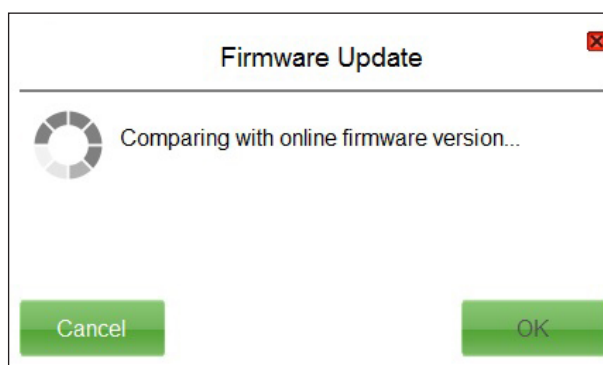


CHECK FOR FIRMWARE UPDATE

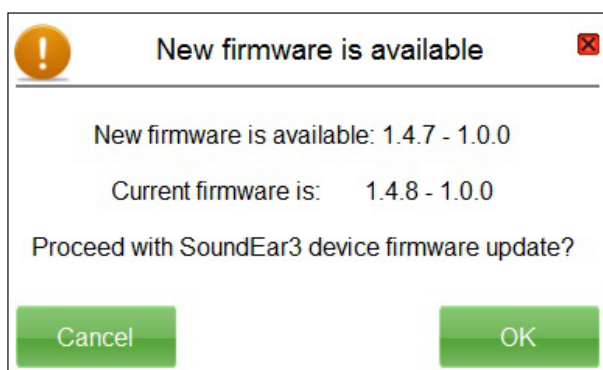
Under "Device Information" you can also check for firmware updates for the Noise Guide device.



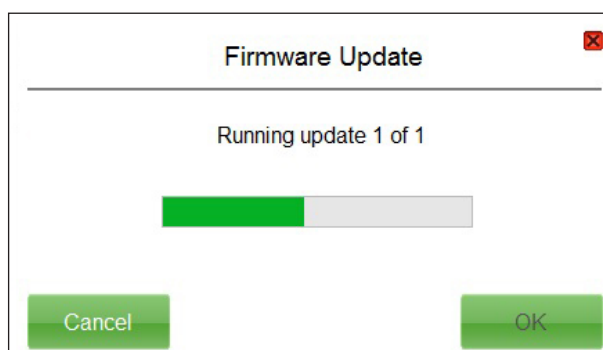
1. Connect Noise Guide to your PC. Make sure that your PC is connected to the internet.
2. Click on "Check for firmware updates".



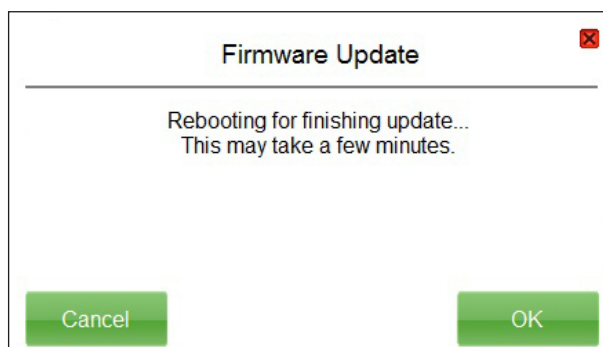
3. If there is a new version available, this box will appear. Click on "OK" to update to the latest version of the firmware.



4. The firmware is being updated.



5. Restart the Noise Guide when the update is complete.



SETUP

LIGHT SETTINGS

Under "Light Settings" you can adjust the settings for the alarm levels. Here is an example:

1. The Ear-symbol is lit green up to 60 dB.
2. The Ear-symbol is lit yellow from 60 dB to 70 dB.
3. The Ear-symbol is lit red after 70 dB

The screenshot displays the "NOISE GUIDE · Settings" application window. The top bar shows "Connected" and the time "18-12-2015 14:35:07". The left sidebar contains three main sections: "QUICK SETUP" with buttons for "Noisy Office", "Normal Office", and "Quiet Office"; "SETUP" with "Device Info", "Light Settings" (highlighted), "User Manual", and "About Noise Guide"; and "MEASUREMENT DATA" with "Live Measurement", "Measurement Library", and "Import Data From USB". A "Factory setting" button is at the bottom of the sidebar.

The main content area is titled "Light Settings" and features a horizontal bar at the top with three segments: green (0-60 dB), yellow (60-70 dB), and red (70-100 dB). Below this, three Jabra ear icons are shown with corresponding light patterns: green, yellow, and red. Two red arrows point from the 60 dB and 70 dB markers on the top bar to the 65 dB and 75 dB markers on the bottom bar. The bottom bar also has a green segment (0-65 dB), a yellow segment (65-75 dB), and a red segment (75-100 dB).

Configuration options include:

- "Red Ear Setting: [Leq 15/30/60]:" with a "Light off:" checkbox.
- "Averaging time for bottom light:" with three ear icons and a "Flashing 1. sec." dropdown.
- "Time:" with a range from "23:25" to "07:15".

Buttons at the bottom include "Export Setup to USB" and "Configure".

Red Ear Setting:

[Leq 15/30/60]:

Light off:

Averaging time for bottom light:

RED EAR SETTING

By default, the red Ear-symbol will be lit for 1 second when the noise limit is exceeded. Under "Light Settings" you can change the duration and type of alarm:

- Lit 1 sec.
- Lit 2 sec.
- Flashing 1 sec.
- Flashing 2 sec.

LEQ 15/ 30/ 60

By default, the light panel at the bottom of the device will indicate the average noise level over the past 15 minutes.

In "Light Settings" you can set the light panel to show the average noise level for the the past 15, 30 or 60 minutes.

In "Light Settings" you have the option of switching off the light alarm for a certain duration of time.

- Check the box "Light off".
- Select a time period for the lights to be switched off.

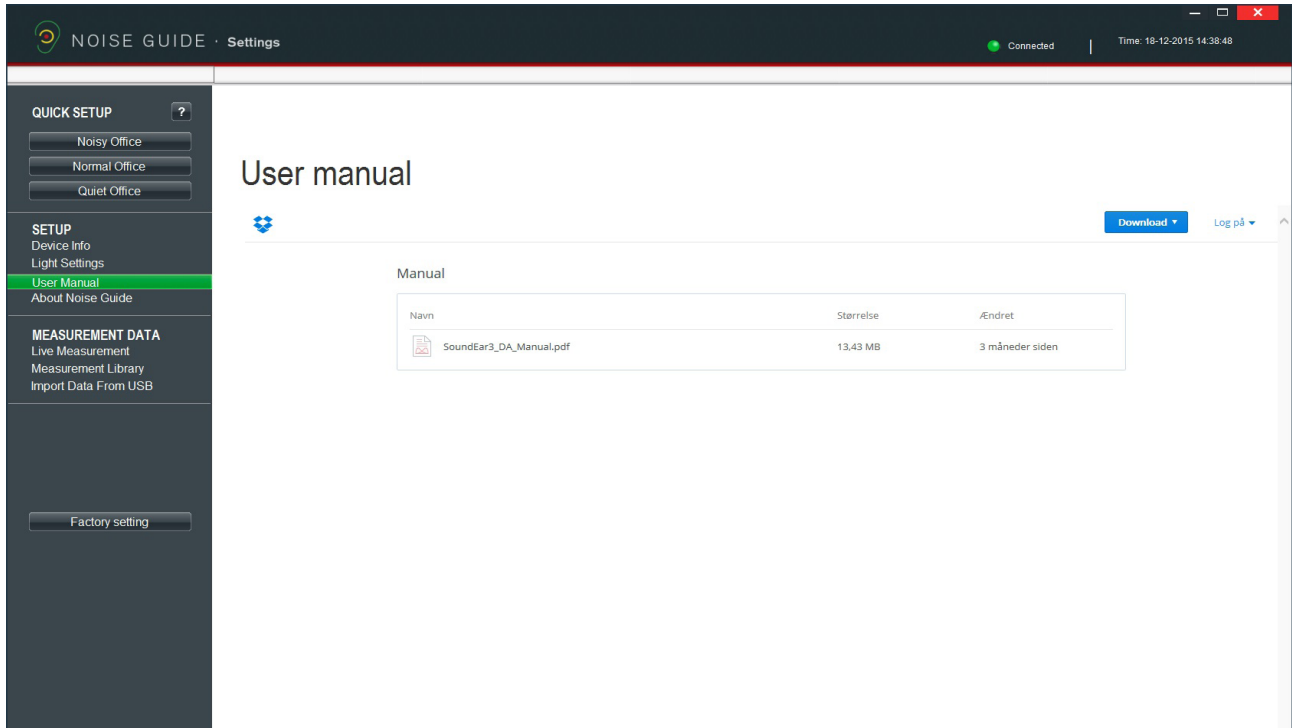
Please note! The internal memory will continue to log data disregarded that the lights are switched off.

PLEASE NOTE! If your Noise Guide is connected directly to your PC, remember to save your settings by clicking on "Configure". Click "Export to USB" if you are performing an offline configuration.

SETUP

USER MANUAL

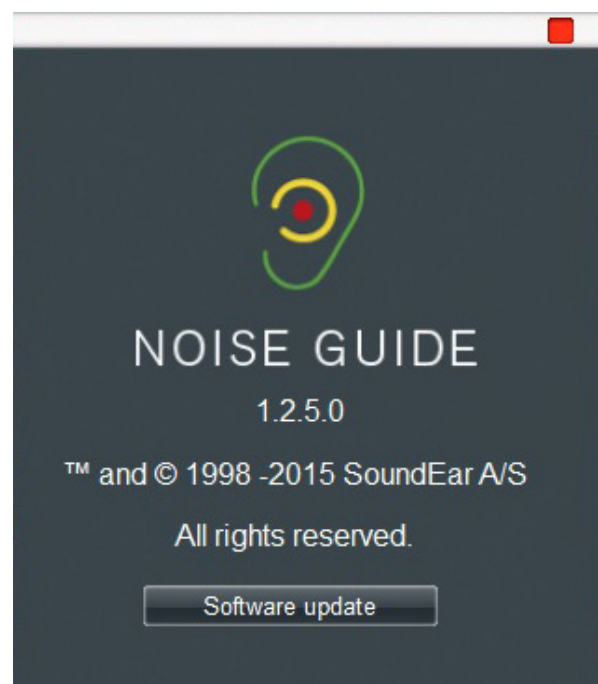
Go to "User Manual" to download the latest version of the manual.



ABOUT NOISE GUIDE

Here you can see what software version is installed on your computer.

Click "Software update" to update to the latest software version. The "Software Update" button links to our web site where you can find the latest software version. Always remember to update your Noise Guide with latest versions of both software (for your PC) and firmware (for the Noise Guide device).

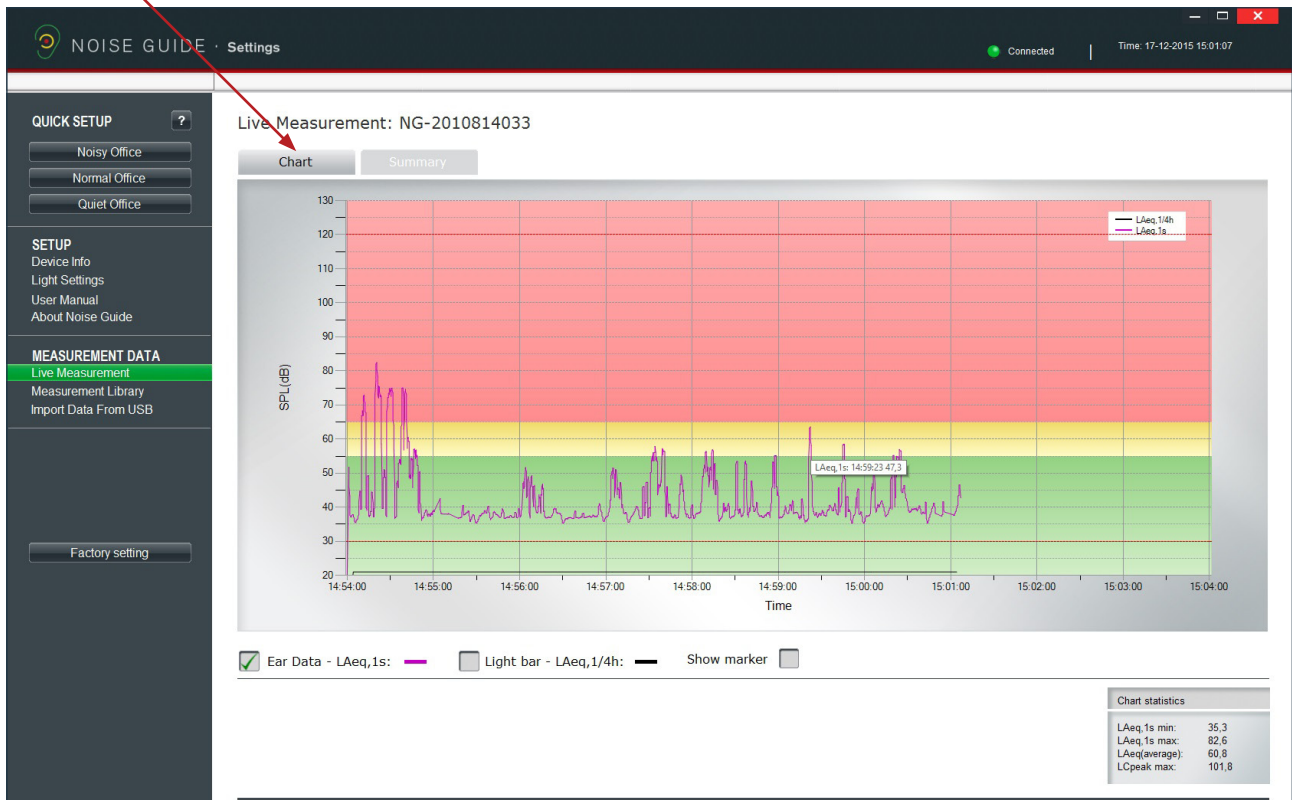


LIVE MEASUREMENT

You can view live measurements in the software by connecting your Noise Guide directly to your PC. All data will be saved automatically to the "Noise Guide Data" folder on the C-drive every 24 hours.

CHART

Under "Live Measurement", select the left tab "Chart" to view live measurements in a graph.



The green, yellow and red colour blocks on the graph visualize the light settings for your Noise Guide. The colour blocks will change according to your light settings.

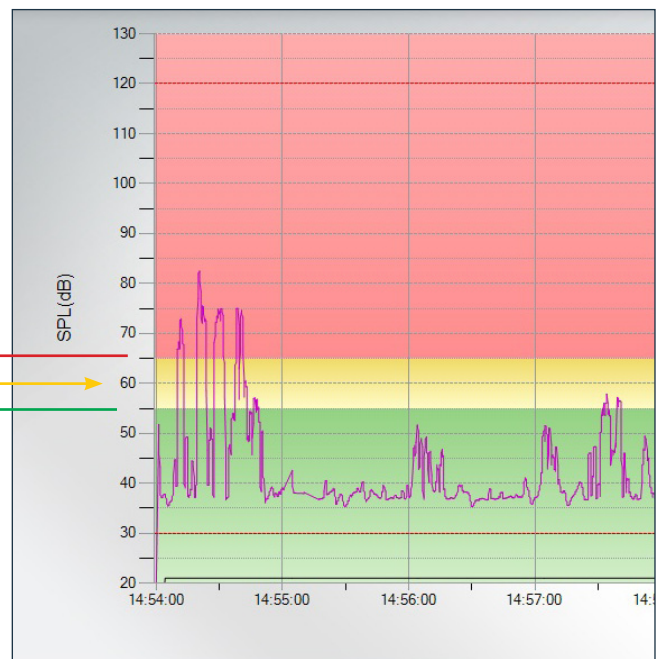
Example:

In this example the settings are:

Red: 65 dB - 120 dB

Yellow: 55 dB - 65 dB

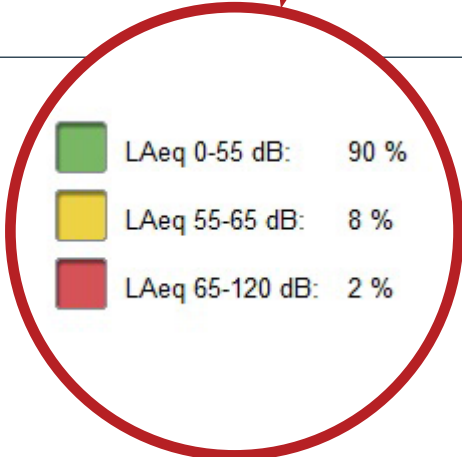
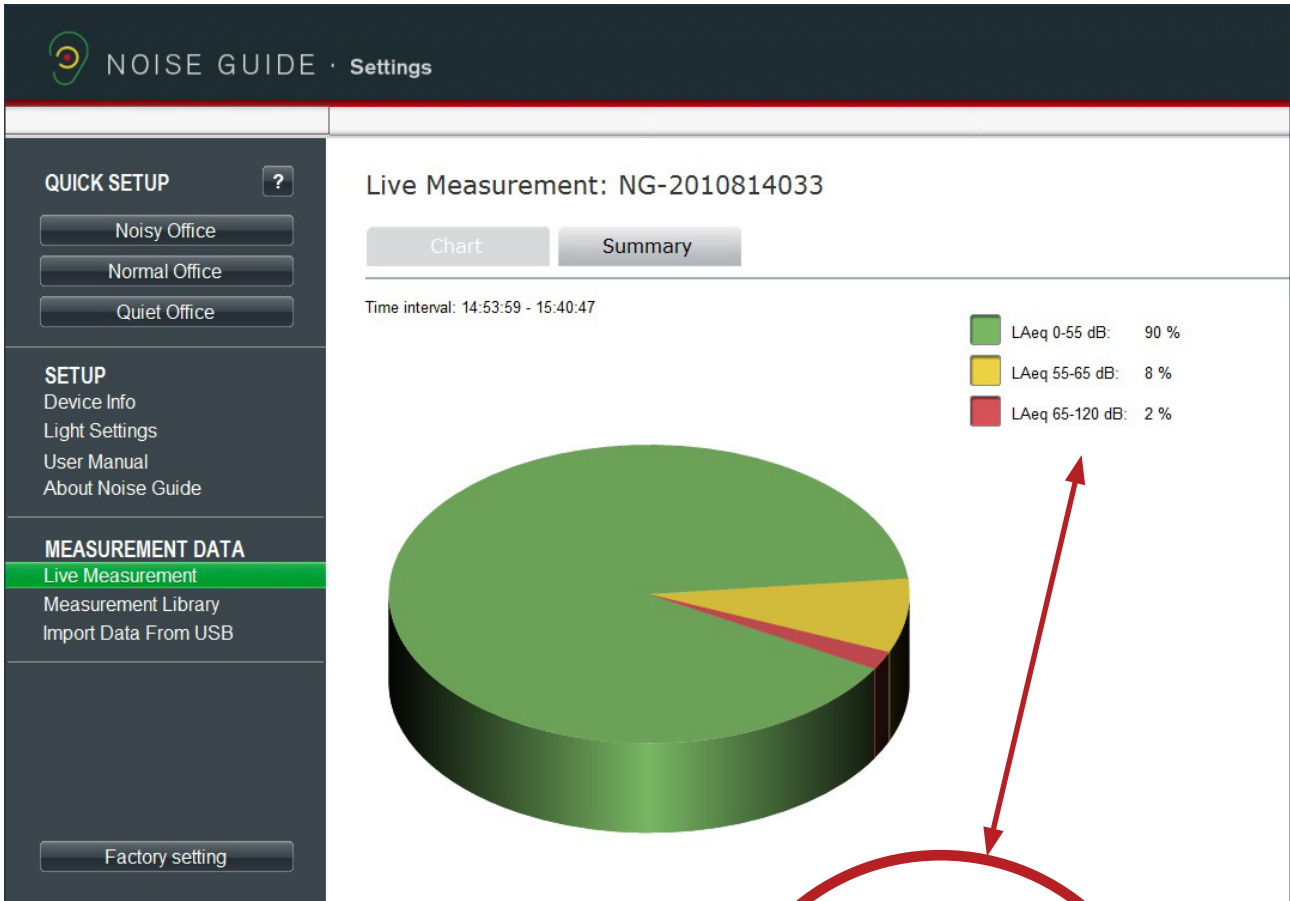
Green: 30 dB - 55 dB



MEASUREMENT DATA

SUMMARY

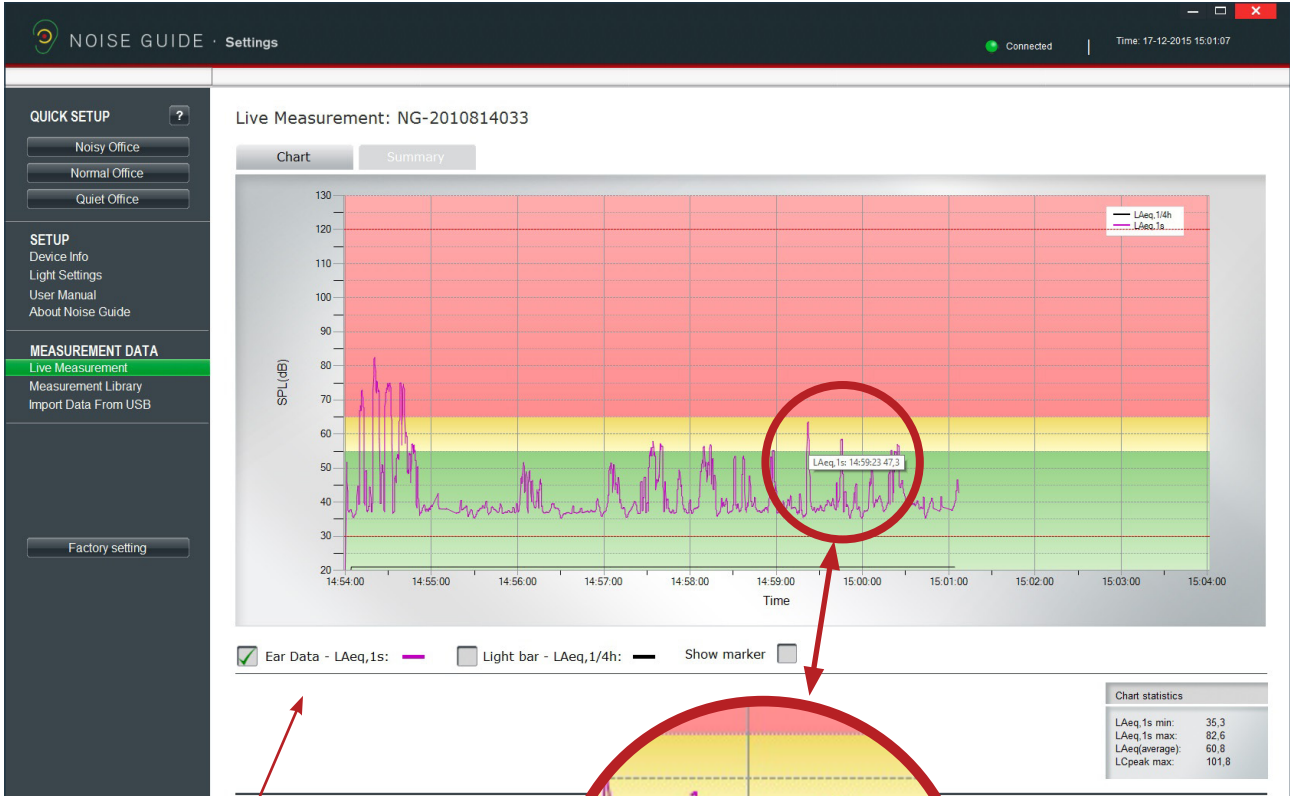
Click the right tab "Summary" to get a statement of your measurements in percentage.



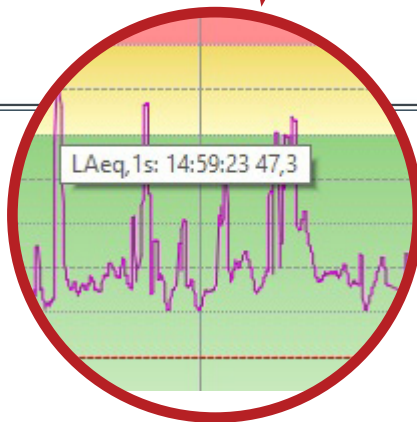
NAVIGATING THE SOFTWARE

READING THE GRAPH

Place the cursor over the graph to view time and noise level values.



Select what values you want the graph to show.



In the bottom right corner a box shows the chart statistics for the certain period.

VALUES EXPLAINED:

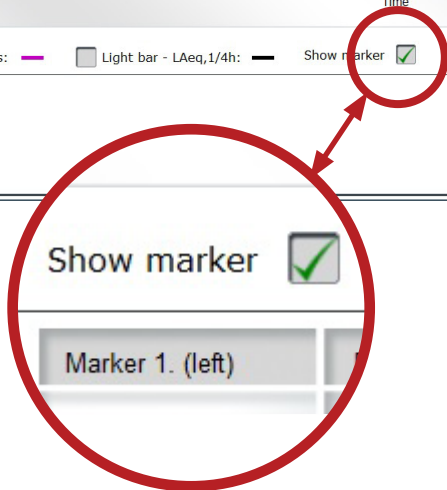
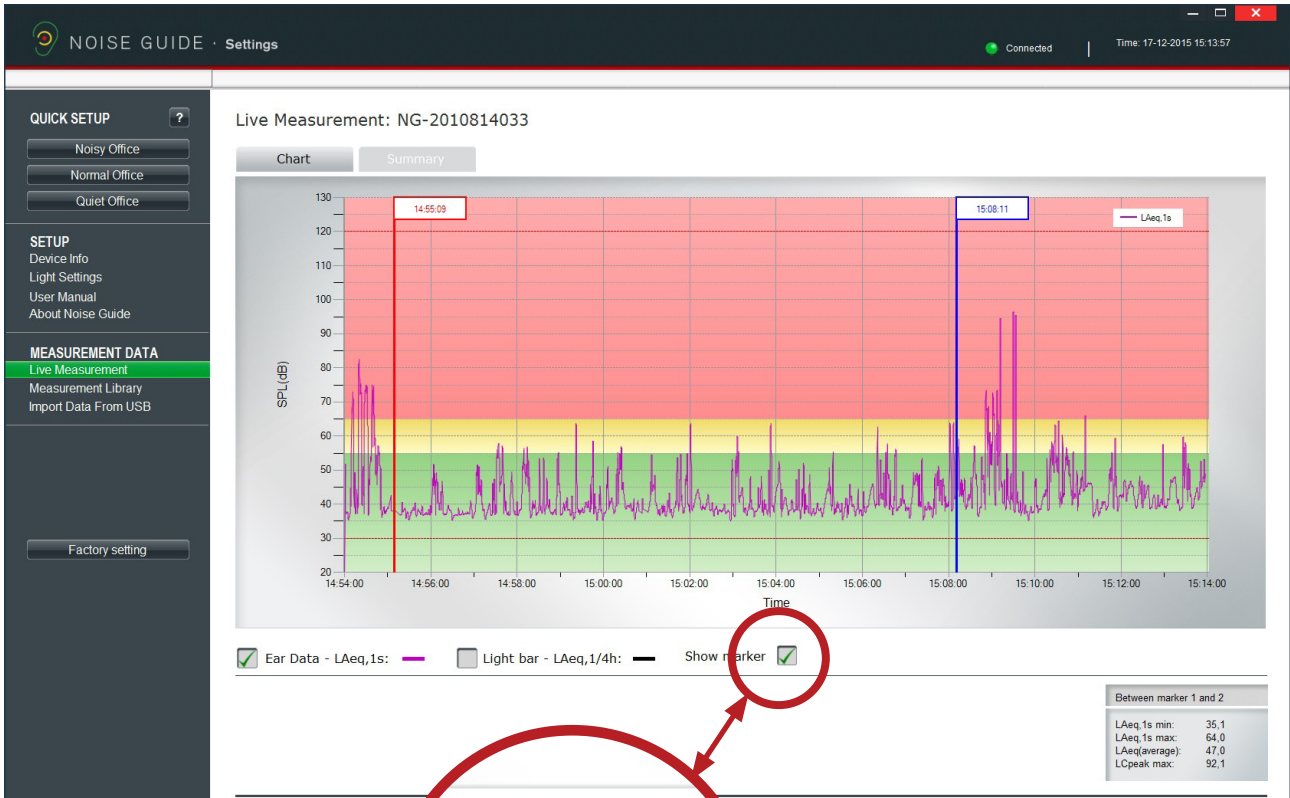
- LAeq, 1s min: Lowest noise measurement for a certain period.
- LAeq, 1s max: Highest measurement for a certain period.
- LAeq(average): Average noise level for a certain period.
- LCpeak max: Highest peak measurement for a certain period.

Chart statistics	
LAeq,1s min:	35,3
LAeq,1s max:	82,6
LAeq(average):	60,8
LCpeak max:	101,8

NAVIGATING THE SOFTWARE

SHOW MARKER

The "Show marker" function allows you to examine the measurements in a certain period of time. To select a period on the graph, check the box "Show marker". A red and a blue marker will now appear.



Move the markers by pulling them from side to side. Alternatively, you can move them to a certain point by typing the time in the white box at the top of the marker. Remember to put a colon between hours and minutes.

In the bottom right corner you can view the values between the left and right marker.

Between marker 1 and 2	
LAeq,1s min:	35,1
LAeq,1s max:	96,4
LAeq(average):	70,9
LCpeak max:	129,6

NAVIGATING THE SOFTWARE

ZOOM FUNCTION

Whenever data is shown on the graph, it is possible to zoom in to look more closely on a specific area.

1. Current measurement.



21

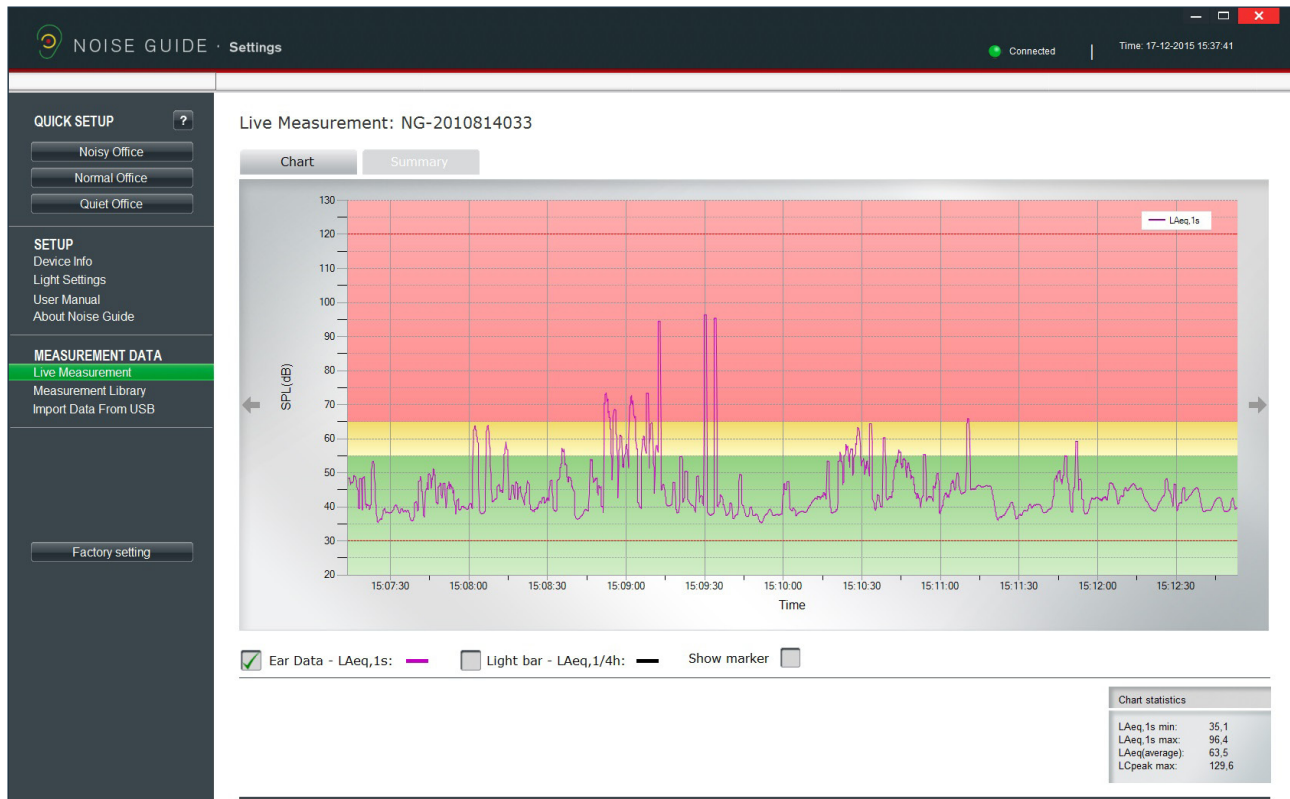
How to zoom in:

2. Position your cursor anywhere on the graph.
3. Left-click and use the cursor to pull a grey area, pulling towards the right.
4. Release the cursor when the wanted area is selected.
5. View the magnified area.

NAVIGATING THE SOFTWARE

ZOOM FUNCTION

The screen is now showing the magnified area.



How to exit the zoom function:

1. Position your cursor anywhere on the graph.
2. Left-click and use the cursor to pull a box, pulling towards the left until the box is visible again.

MEASUREMENT LIBRARY

Noise Guide automatically saves all live measurements to the C-drive in the folder called "Noise Guide data". Data imported from the Noise Guide via USB are also saved in this folder. All files are saved in a CSV format that is compatible with Excel.

Log files will be named "PC" if they are live measurements, and "Internal" if they are exported from the Noise Guide's internal memory.

The log file names are created as follows:

1. Name of device
2. Date
3. Origin of the data (live measurement or imported via USB)

Example of a live measurement:

- Strandboulevarden-11-03-2015-PC

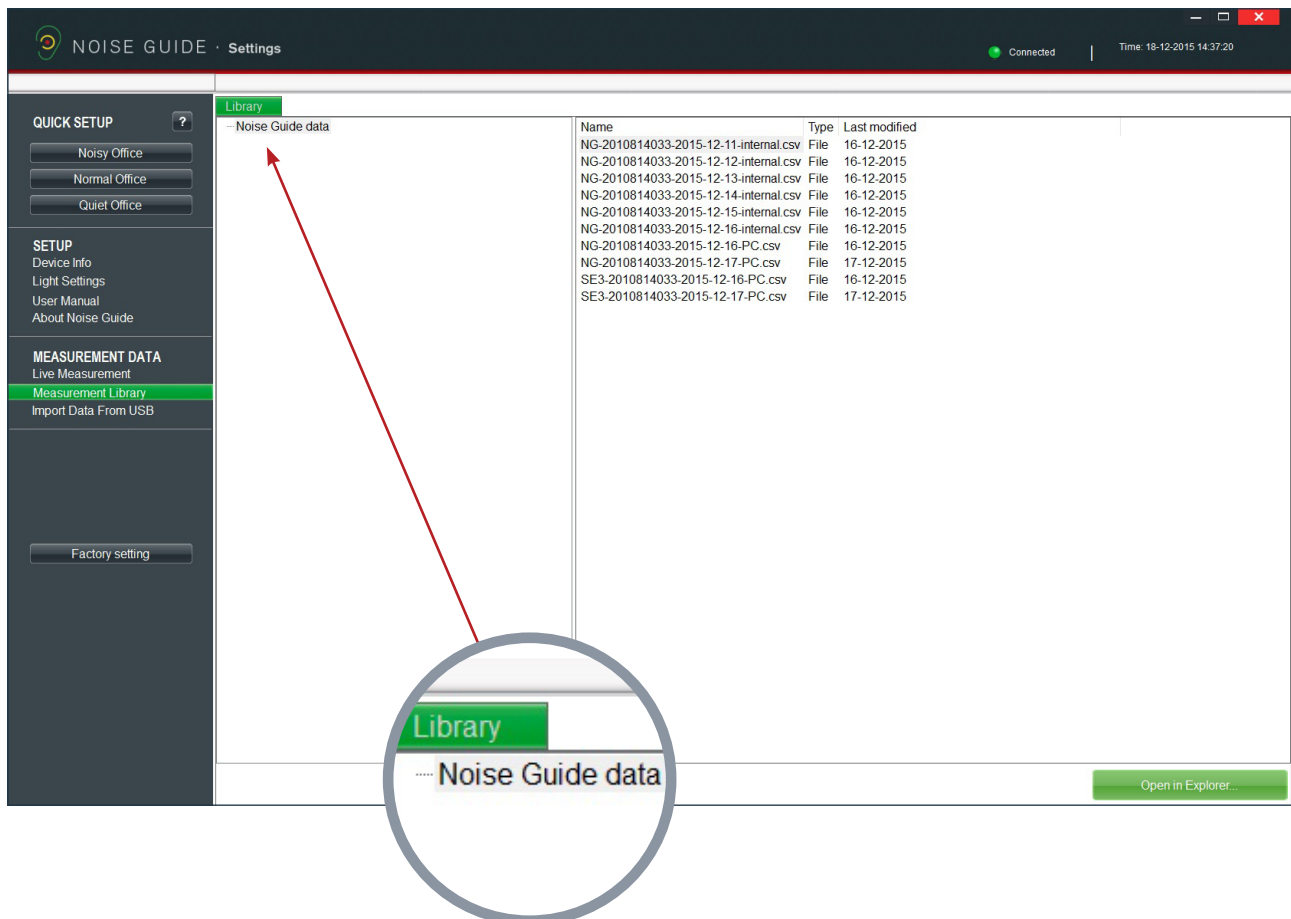
Example of an imported measurement:

- Strandboulevarden-09-03-2015-internal

If you wish to rename or edit your log files, this must be done from the destination folder on the C-drive. Take a short-cut to the destination folder by clicking "Open in Explorer" in the bottom right corner.

Open in Explorer...

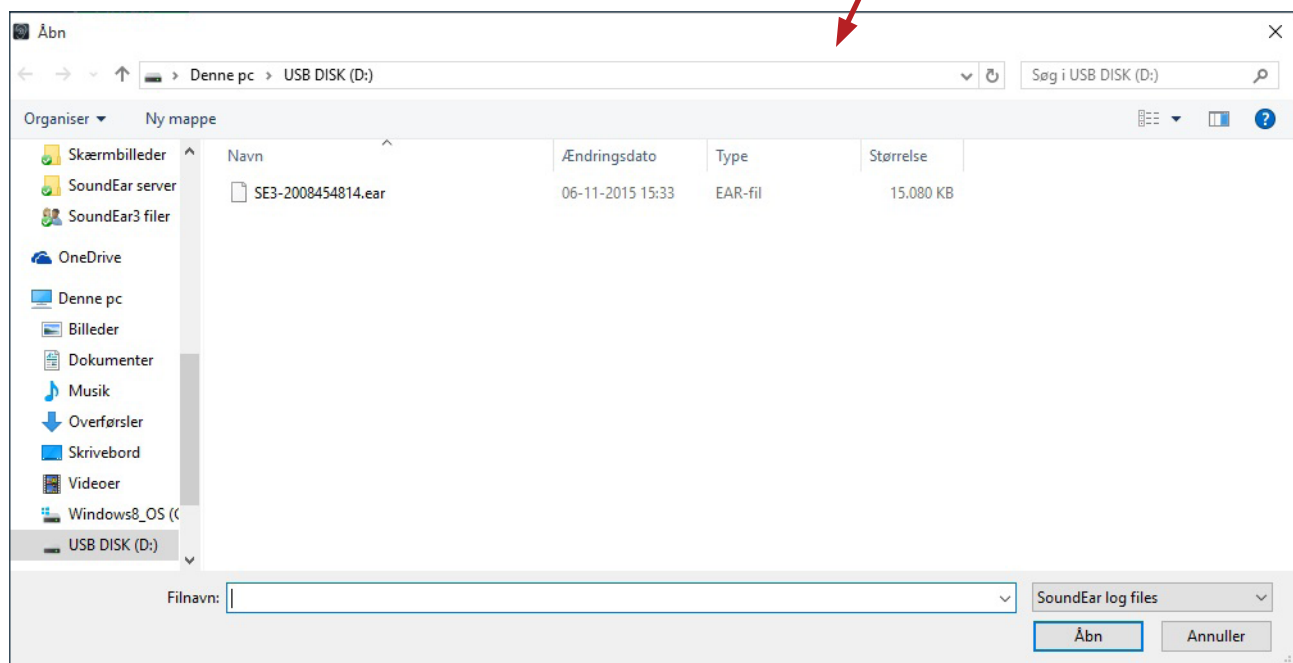
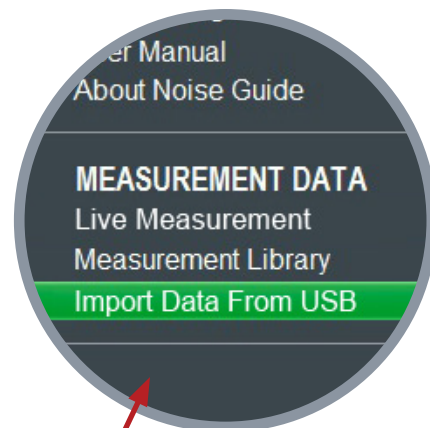
Select "Noise Guide data" to update the folder in the software.



NAVIGATING THE SOFTWARE

IMPORT DATA FROM USB

1. Connect a USB-key to your Noise Guide.
While the data is exporting from the internal log to the USB-key, the Ear-symbol will light yellow. It may take up to a few minutes, depending on the amount of data.
2. Remove the USB-key from the device when the yellow light has stopped flashing. Insert the USB-key in your PC.
3. Open the software and click "Import from USB".
The software will open the folder automatically.
4. Select the file you want to import.



5. The software now converts the ear-file to a CSV-format and saves the file in the library.

FACTORY SETTINGS

If you wish, you can always restore the Noise Guide's Factory Settings. We recommend that you install the Factory Settings whenever the firmware is being updated. You can also restore the Factory Settings if you want to reset the internal memory in your Noise Guide.

Maintenance and service must be performed only by a trained service technician. After completing maintenance / service, a functionality check and a visual inspection of the device must be performed before it may be used again.

DESINFECTATION / CLEANING

Noise Guide contains materials that cannot tolerate substances used in conventional surface disinfectants. Therefore, use only alcohol to clean the product.

Desinfection by wiping:

- Firstly, remove dirt and grime from the surface using a moist disposable cloth.
- The surface can then be disinfected by wiping and the use of alcohol.

TECHNICAL SPECIFICATIONS

NOISE GUIDE SOFTWARE

Operative system: Windows XP SP3, Windows Vista, Windows 7, Windows 8, Windows 10

Harddisk	: 100 Mbytes
RAM	: 512MB RAM
USB port	: 1 x USB 2.0 port
CPU	: 1.5GHz AMD/Intel processor

We recommend that you do not use a screen size smaller than 1366x768.

NOISE GUIDE SPECIFICATIONS

Frequency Range	20 Hz – 20kHz
Measuring Level Range	30 dB – 120 dB
Accuracy	+/- 1.5 dB
Frequency Weighting	dB(A) and dB(C) filters
Time Weighting	Slow (1S)
Dynamic Range RMS	90dB
Light managing	Full configurability through SoundEar software, including night setting
2 x USB ports	Micro USB (Power & PC connection), USB OTG (Log and config)
Display Data	dB(A) Slow, Leq(A)15
Power Supply	5VDC (micro USB) Current consumption: max 2.5W.
Microphone	20 Hz – 20 KHz
Mass Storage (Internal memory)	16MB (128Mbit) Up to 90 days' log time
Real Time Clock	Hi-precision type with battery backup (CR2032).
Mechanical Features	Cabinet: Aluminum, Lexan and acrylic
Measurements:	length: 1340 mm, width: 700 mm, height: 700 mm Weight: 0.4 kg



SoundEar AVS

www.soundear.com



UK: The crossed-out wheeled bin means that within the European Union the product must be taken to separate collection at the product end of its life. This applies not only to your device but also to any enhancements marked with this symbol. Do not dispose of these products as unsorted municipal waste.